

# CONGRESS

## BAD ZURZACH FIRST TIME TRAVELER GUIDE

---





Welcome! This guide was created to help first-time travelers feel comfortable and confident when visiting Bad Zurzach and the surrounding region. Whether you are traveling internationally for the first time or simply visiting Switzerland for the first time, the information in this guide is designed to make your journey smoother and more enjoyable.

We hope this guide helps you travel with confidence, curiosity, and peace of mind as you explore Bad Zurzach and experience the beauty and hospitality of Switzerland. Safe travels!

# WELCOME



# VISAS, ETIAS & ENTRY RULES (US CITIZENS)

---

**For information for Non-US Countries: <https://www.ch.ch/en/travel-and-emigrate/holidays-in-switzerland/travel-documents-for-entering-switzerland/#citizens-of-non-european-states>**

Short stays (tourism/business): U.S. citizens generally do not need a visa for stays up to 90 days in any 180-day period in the Schengen Area (Switzerland included).

Official guidance: [U.S. Travelers in Europe \(Travel.State.gov\)](https://travel.state.gov/europe)

Passport validity: Plan for your passport to be valid at least 3 months beyond your departure from the Schengen Area (some sources recommend 6 months for extra cushion). See: [Travel.State.gov Europe guidance](https://travel.state.gov/europe)

ETIAS (coming for visa-exempt travelers): ETIAS is an online travel authorization (not a visa) expected to be required before boarding for most visa-exempt travelers, including U.S. citizens. Official EU info: [What is ETIAS? \(EU\)](https://etias.europa.eu/)

Helpful US pages: [Switzerland entry info \(Travel.State.gov\)](https://travel.state.gov/europe)



# WHAT TO PACK

---

## Electronics & Power

- Switzerland uses Type J power plugs (three round pins).
- Many outlets also accept two-pin plugs (Type C / Europlug).
- Voltage: 230V / 50Hz.
- Most phones, laptops, and tablets are dual-voltage and safe to use with an adapter.

### What to bring:

- A Type J adapter (recommended).
- A small power strip so one adapter can charge multiple devices.

### What to avoid:

- US-only hair dryers or curling irons unless clearly marked dual-voltage.

## Packing & Clothing Tips

- Dress in layers—weather can change quickly.
- Comfortable walking shoes are essential.
- Bring a light rain jacket and a day backpack.
- Carry a refillable water bottle.

## Average Temperatures (Mid-August)

- Average daytime high: about 74–76°F (23–25°C)
- Average nighttime low: about 55–57°F (13–14°C)
- Average overall temperature: around 66°F (19°C)



# SUGGESTED PACKING LIST FOR IN CABIN LONG HAUL FLIGHTS

---

## Long-Haul Flight Comfort Kit

### Sleep & comfort:

- Neck pillow
- Eye mask
- Noise-canceling headphones or earplugs
- Compression socks

### Hydration & freshness:

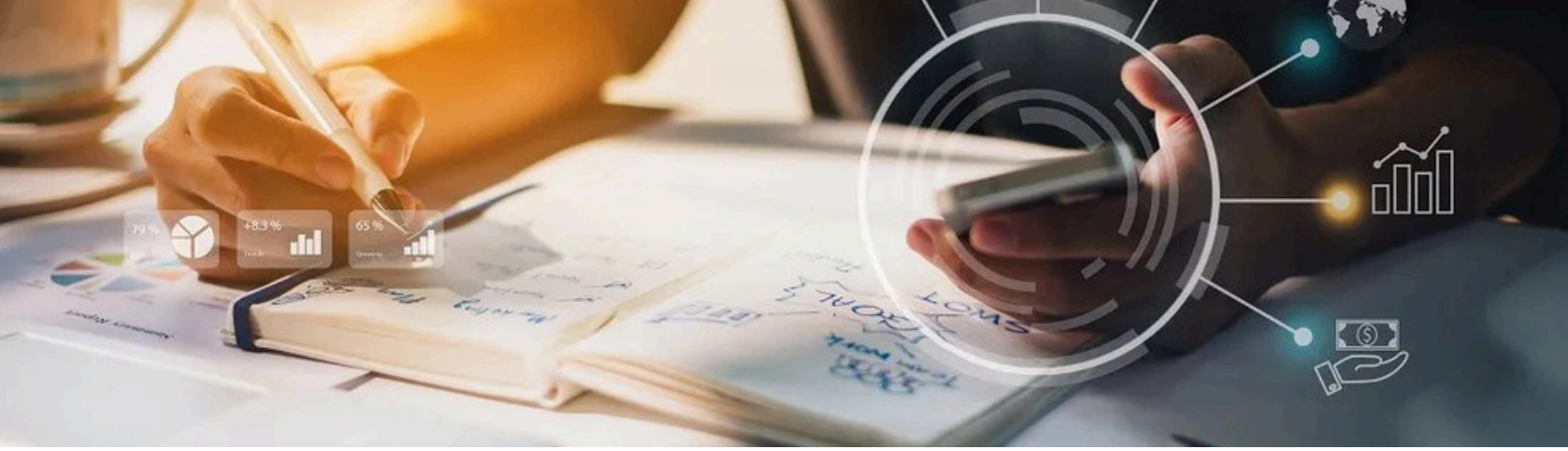
- Empty reusable water bottle (fill after security)
- Electrolyte packets
- Lip balm + travel moisturizer
- Toothbrush/toothpaste + deodorant
- Hand sanitizer + disinfecting wipes

### Clothing & temperature:

- Soft layers (cabin temps vary) + light scarf (Doubles as a blanket)
- Stretchy pants
- Warm socks
- Slip-on shoes

### Snacks & small essentials:

- Protein bar or nuts/ Something salty + something sweet
- Charging cable + portable battery
- Downloaded entertainment (don't rely on Wi-Fi)



# STAY CONNECTED

---

## **Phones, Data & Wi-Fi**

- Free Wi-Fi is common in hotels, trains, and cafés.
- EU roaming plans often work.
- eSIMs (Airalo, Holafly, etc.) are a good option for data.

### **Tip:**

- Download Google Maps offline and SBB Train APP before traveling.

## **Money & Payments**

- Currency: Swiss Franc (CHF).
- Credit/debit cards are widely accepted.
- Carry some cash for small bakeries, rural cafés or public toilets.

### **ATMs (Geldautomat):**

- Widely available.
- Offer better exchange rates than airport currency desks.

## **Water & Drinking Etiquette**

- Tap water in Switzerland is safe everywhere and often spring-quality.
- Public fountains usually provide drinkable water unless marked 'Kein Trinkwasser'.

### **Restaurants:**

- Tap water is not automatically free.
- You will usually be served bottled still or sparkling water.
- Bottled water typically costs CHF 4–7.



# GETTING AROUND

---

## **Arriving at Zurich Airport: Passport Control & Customs Timing**

Typical planning range (gate to train station exit): about 30–60 minutes when it's flowing well; 60–90+ minutes during peak long-haul arrival banks (especially summer).

What usually takes the time: walking from gate → passport control line → baggage claim (if checked). The actual customs exit is often quick unless you are pulled for inspection.

Zurich Airport's border-control overview: [Border control info \(Zurich Airport\)](#)

## **Train Connections (from Zurich Airport)**

The airport train station is located directly beneath the terminal, making transfers quick and straightforward once you exit customs. On the official website you can see your next connection. <https://www.sbb.ch/en>

Most Common Onward Connections from Zurich Airport:

### **Destination & Travel Time**

Zürich Hauptbahnhof (Zurich Main Station) ~ 10 min

Baden ~ 40 min

Winterthur ~ 15 min

**Bad Zurzach** ~ 1 hour



# ZÜRICH AIRPORT: TERMINAL TO TRAIN

## Transportation Basics

- Switzerland has one of the best public transportation systems in the world.
- Trains are punctual, clean, and reliable.
- There are no ticket gates—tickets are checked on board.
- Tickets can be purchased via the SBB app or at ticket machines.

**The train station is located directly beneath the airport terminals, so no shuttle or outdoor walking is required.**

### Helpful words:

- **Bahnhof** = train station
- **Gleis** = platform





# TERMINAL TO TRAIN

---

## **Step 1 – Exit Customs and Look for Train Signs**

After collecting your luggage and exiting customs, enter the Arrivals Hall. Look for the blue signs labeled '**Train / Bahnhof / SBB**' with a train icon.

## **Step 2 – Follow Signs to the Train Station**

Follow the train signs to the escalators or elevators leading one level down to the airport train station (**Bahnhof Zürich Flughafen**).

## **Step 3 – Purchase or Check Your Ticket**

In the station concourse you will find:

- Ticket machines with English language options
- Swiss Federal Railways (SBB) ticket counters
- Large digital departure boards showing train times and platforms

## **Step 4 – Find Your Platform**

Check the departure board for your train and locate the platform number (called '**Gleis**' in German). Take the escalator or elevator down to the platform.

## **Step 5 – Board the Train**

Swiss trains are very punctual. Arrive at the platform about 5 minutes before departure so you are ready when the train arrives.

## **Helpful Tips for First-Time Travelers**

Signs are clearly marked in English and German

The airport train station is inside the airport building

It usually takes 5–10 minutes to walk from baggage claim to the platform

Keep your ticket handy if inspectors check tickets on the train



# ZURICH TO BAD ZURZACH

---

## **1. Expect one transfer**

Most routes require one transfer, usually at Zürich HB or Baden. This is normal in Switzerland and stations are clearly marked.

## **2. Go to the correct platform and Confirm the train before boarding**

Follow signs for the platform number (Gleis). Use escalators or elevators to reach the correct track. Check the screen on the platform to confirm the train destination and that it stops at your transfer station.

## **8. Board the train**

Press the button on the train door if needed. Sit anywhere in the correct class (most travelers use 2nd class). Keep your ticket accessible for inspection.

## **9. Make your transfer**

When you arrive at Zürich HB or Baden, follow platform signs and departure boards for the next train to Bad Zurzach.

## **10. Arrive in Bad Zurzach**

Bad Zurzach is a small station and easy to navigate. Exit the train and follow signs to the town center or taxi area.

## **Quick Travel Checklist**

- Follow signs for Train / Bahn / SBB
- Buy ticket to Bad Zurzach
- Check the departure board for platform (Gleis)
- Ride to Zürich HB or Baden
- Transfer to train toward Bad Zurzach
- Exit at Bad Zurzach



# OTHER INFORMATION

---

## Culture & Etiquette

- Swiss culture values punctuality, quiet, and order.
- Speak softly on public transportation.
- Shops are often closed on Sundays—plan ahead.
- English is widely understood.

## Safety & Health

- Switzerland is very safe.
- Pharmacies are excellent and offer medical advice.
- **Emergency number: 112.**

## First-Time Traveler Reassurance

- Not speaking German is normal—English is widely used.
- Asking for help is acceptable; people may be reserved but are helpful.
- Feeling confused on day one is normal—Switzerland is forgiving for travelers.

## Common Swiss-German Words:

- |                          |                                 |
|--------------------------|---------------------------------|
| • Water - Wasser         | • Hotel - Hotel                 |
| • Coffee - Kaffee        | • Restaurant - Restaurant       |
| • Tea - Tee              | • Grocery Store/Market - Marktz |
| • Please - Bitte         | • Hospital - Krankenhaus        |
| • Thank you - Danke      | • Police - Polizei              |
| • ATM - Geldautomat      | • Taxi - Taxi                   |
| • Tran Station - Bahnhof | • Gluten - Free - Glutenfrei    |



# THINGS TO DO & MUST-SEE HISTORIC SITES: BAD ZURZACH (CH) + RHEINHEIM/KÜSSABERG (DE)

LEGEND: HISTORIC | NATURE | WELLNESS | WALK |  
FAMILY-FRIENDLY | FROM STATION | BUS | TRAIN

---

## Bad Zurzach (Switzerland)

Most Bad Zurzach sights are walkable from the train station. For longer/accessible hops, use the free local bus (Zurzibus) from the station area (check timetables).

### Verenamünster (Verena Minster)

Family-friendly? Family-friendly

Why it's worth it: Bad Zurzach's signature church and pilgrimage landmark tied to St. Verena, with deep Roman and medieval roots.

How to get there from Bad Zurzach (public transport):

- From Bad Zurzach Bahnhof: walk ~10–15 minutes through the town center (easy, flat).
- If mobility is limited: take the free local bus (Zurzibus) to the closest town-center stop (use the SBB planner or local bus map).

Helpful tips:

- Great 'first stop' because it anchors the old town.
- Quiet, respectful space—bring a light layer if it's cool inside.
- Free local bus info (Zurzibus): <https://www.postauto.ch/en/timetable-and-network/local-transport/zurzibus>



# THINGS TO DO & MUST-SEE HISTORIC SITES: BAD ZURZACH (CH) + RHEINHEIM/KÜSSABERG (DE)

LEGEND: HISTORIC | NATURE | WELLNESS | WALK |  
FAMILY-FRIENDLY | FROM STATION | BUS | TRAIN

---

## Bad Zurzach (Switzerland)

Most Bad Zurzach sights are walkable from the train station. For longer/accessible hops, use the free local bus (Zurzibus) from the station area (check timetables).

### Historic Old Town Walk (Town Center + Münsterplatz)

Family-friendly? Family-friendly

Why it's worth it: A compact, walkable historic core—ideal for first-timers who want 'old Europe' without complex navigation.

How to get there from Bad Zurzach (public transport):

- From Bad Zurzach Bahnhof: walk 8–15 minutes to the center; then loop through Münsterplatz and side streets.
- Optional: use Zurzibus for a shorter walk (especially with small kids or limited mobility).

Helpful tips:

- Plan 45–90 minutes for a slow stroll with photos.
- Pair it with the Verena Minster and a café stop.



# THINGS TO DO & MUST-SEE HISTORIC SITES: BAD ZURZACH (CH) + RHEINHEIM/KÜSSABERG (DE)

LEGEND: HISTORIC | NATURE | WELLNESS | WALK |  
FAMILY-FRIENDLY | FROM STATION | BUS | TRAIN

---

## Bad Zurzach (Switzerland)

Most Bad Zurzach sights are walkable from the train station. For longer/accessible hops, use the free local bus (Zurzibus) from the station area (check timetables).

### Therme Zurzach (Thermal Baths)

Family-friendly? Family-friendly

Why it's worth it: The top relaxation stop: thermal pools plus optional spa/sauna areas (check age rules for sauna zones).

How to get there from Bad Zurzach (public transport):

- From Bad Zurzach Bahnhof: walk ~5–10 minutes to the Therme.
- Easiest with kids/luggage: take the free local bus (Zurzibus) to the stop “Bad Zurzach, Therme / Thermalbad” (check timetable).

Helpful tips:

- Bring flip-flops and a swimsuit; pack a small waterproof bag for essentials.
- Use the Therme's site for opening hours and family/quiet zones.
- Official site: <https://www.thermezurzach.ch/>



## THINGS TO DO & MUST-SEE HISTORIC SITES: BAD ZURZACH (CH) + RHEINHEIM/KÜSSABERG (DE)

LEGEND: HISTORIC | NATURE | WELLNESS | WALK |  
FAMILY-FRIENDLY | FROM STATION | BUS | TRAIN

---

### **Bad Zurzach (Switzerland)**

Most Bad Zurzach sights are walkable from the train station. For longer/accessible hops, use the free local bus (Zurzibus) from the station area (check timetables).

#### **Tierpark Bad Zurzach (Animal Park)**

Family-friendly? Family-friendly

Why it's worth it: A high-value family stop: animals + outdoor time; great for kids and a low-stress morning activity.

How to get there from Bad Zurzach (public transport):

- From Bad Zurzach Bahnhof: walk (allow ~15–25 minutes depending on pace)  
OR use the free local bus to reduce walking.
- Use SBB route planner from 'Bad Zurzach, Bahnhof' to 'Tierpark Bad Zurzach' to see the easiest bus stop + walk combo.

Helpful tips:

- Great before a calm afternoon at the baths.
- Bring snacks/water and plan a short play break.

Website: <https://www.tierpark-badzurzach.ch/>



## THINGS TO DO & MUST-SEE HISTORIC SITES: BAD ZURZACH (CH) + RHEINHEIM/KÜSSABERG (DE)

LEGEND: HISTORIC | NATURE | WELLNESS | WALK |  
FAMILY-FRIENDLY | FROM STATION | BUS | TRAIN

---

### **Bad Zurzach (Switzerland)**

Most Bad Zurzach sights are walkable from the train station. For longer/accessible hops, use the free local bus (Zurzibus) from the station area (check timetables).

#### **Rhine Riverside Walks (easy, flat paths)**

Family-friendly? Family-friendly

Why it's worth it: A simple, scenic 'no-planning' activity—perfect for jet lag, photos, and quiet time by the water.

How to get there from Bad Zurzach (public transport):

- From Bad Zurzach Bahnhof: walk toward the Rhine (10–25 minutes depending on the route you choose).
- If you want a shorter walk: use Zurzibus to a stop closer to the riverside, then stroll along the riverbank.

Helpful tips:

- Stroller-friendly segments exist—use Google Maps walking directions to confirm surfaces.
- Sunset is beautiful along the river.



## THINGS TO DO & MUST-SEE HISTORIC SITES: BAD ZURZACH (CH) + RHEINHEIM/KÜSSABERG (DE)

LEGEND: HISTORIC | NATURE | WELLNESS | WALK |  
FAMILY-FRIENDLY | FROM STATION | BUS | TRAIN

---

### Rheinheim / Küssaberg (Germany – Swiss Border)

**Border note:** Rheinheim is just across the Rhine in Germany (Küssaberg). Carry a passport/ID when crossing. Public transport routes can vary by day/time—use the SBB planner link for live directions.

#### **Pfarrkirche St. Michael (Rheinheim)**

Family-friendly? Family-friendly

Why it's worth it: A significant local Catholic parish church and an easy historic stop directly in Rheinheim.

How to get there from Bad Zurzach (public transport):

- Walk option: from Bad Zurzach, follow the Rhine toward the border crossing/bridge and walk into Rheinheim (good in daylight).
- Bus option: use the SBB route planner from 'Bad Zurzach, Bahnhof' to 'Rheinheim' (often involves a short bus ride + walk).

Helpful tips:

- Village churches may be closed outside service times—check before you go.
- <https://kath-se-ch.de/kirchen-kapellen/pfarrkirche-st-michael-rheinheim/>



## THINGS TO DO & MUST-SEE HISTORIC SITES: BAD ZURZACH (CH) + RHEINHEIM/KÜSSABERG (DE)

LEGEND: HISTORIC | NATURE | WELLNESS | WALK |  
FAMILY-FRIENDLY | FROM STATION | BUS | TRAIN

---

### Rheinheim / Küssaberg (Germany — Swiss Border)

**Border note:** Rheinheim is just across the Rhine in Germany (Küssaberg). Carry a passport/ID when crossing. Public transport routes can vary by day/time—use the SBB planner link for live directions.

#### **Burgruine Küssaburg (Küssaburg Castle Ruins)**

Family-friendly? Family-friendly

Why it's worth it: The must-see historic site of the region—dramatic hilltop ruins with panoramic Rhine valley views.

How to get there from Bad Zurzach (public transport):

- Use the SBB route planner and set destination to 'Küssaberg, Küssaburg' (typically bus to Küssaberg + walk).
- Allow extra time for the final uphill walk/hike from the nearest stop (wear good shoes).

Helpful tips:

- Bring water; the hike is short but can be steep.
- Great for older kids/teens—supervise closely near edges.